



PETROG

A radical approach to petrographic data collection



PETROG is a petrographic textural and compositional analysis tool for the oil industry, which can be easily configured for the collection of igneous, metamorphic, ore, biostratigraphic or coal data.

Composition & textural analysis by point counting

Compositional data is qualified in terms of morphology, preservation and/or location in pores. Textural data consists of grain size & morphology, and rock fabric.

Relationship/attribute rule authentication of data entry

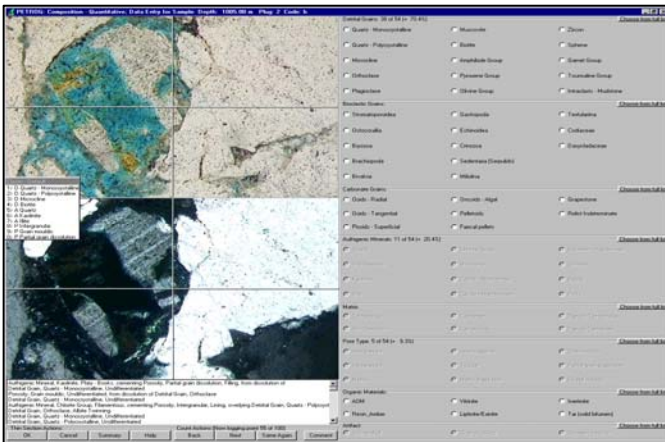
Permissible qualifiers and diagenetic relationships are tested against pre-defined rules.

Multiple component diagenetic relationship entry

Diagenetic relationships can be recorded at up to 3 levels: authigenic mineral X cementing pore type Y created by dissolution of grain Z.

Microporosity calculation for matrix & authigenic minerals

Interstitial microporosity can be assigned to matrix and authigenic minerals by project and/or sample. Total microporosity is calculated & can be user edited to balance measured and observed porosity values.



Editing and review of data

Data can be edited & reviewed by the user, in conjunction with saved sampling point images & comments, facilitating quality assurance.

Original composition calculation

Original mineralogy & porosity (excluding compactional effects) are calculated when all 3 diagenetic relationship levels have been recorded.

Ternary diagrams

Ternary diagrams can be constructed with any end members.

XRD data comparison

XRD analysis (weight to volume % corrected) can be compared to data captured by **PETROG** for each sample.

Grain Size Analysis

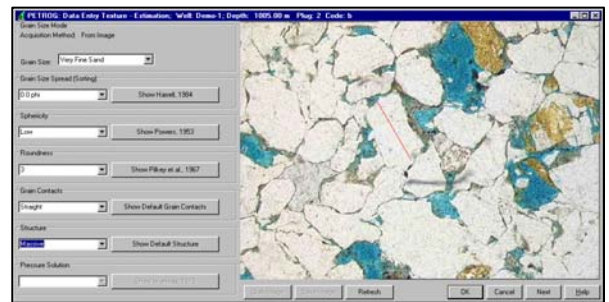
Grain size data analysis is as simple as clicking on ends of major and minor axes, whilst logging or in a separate pass.

Images stored for each analysis point

Images viewed at each sampling point are saved (optional) in jpeg format for data review, editing and/or quality assurance.

Customisable user interface

Configuration of the compositional data collection interface is determined by the user through the definition of 'ticklists' and 'hotkeys'.



Dictionaried data entry

All data items stored are uniquely identified within the system database. Items are hierarchically organised allowing data type combination for analytical purposes. Data is stored within a relational database.

Export/Import of data to 3rd party software or corporate databases

Import of core analysis, XRD & petrographic data from other systems allows maximum productivity, interaction and reuse of data; export to Touchstone and other proprietary systems minimises data transcription errors.

Hardware compatibility

PETROG controls the fully automated stepping stage developed by CVS. **PETROG** runs on PCs using the Windows NT, 2000, XP, Vista and Windows 7 operating systems.

Designed and manufactured by
CONWY VALLEY SYSTEMS LTD

Marketed and supported by
**CANIMPEX
CPX-SOLUTIONS**

www.cpx-petrog.com
www.cpx-solutions.com
E-mail: petrog@cpx-solutions.com
Tel. +1.902.457-08975